



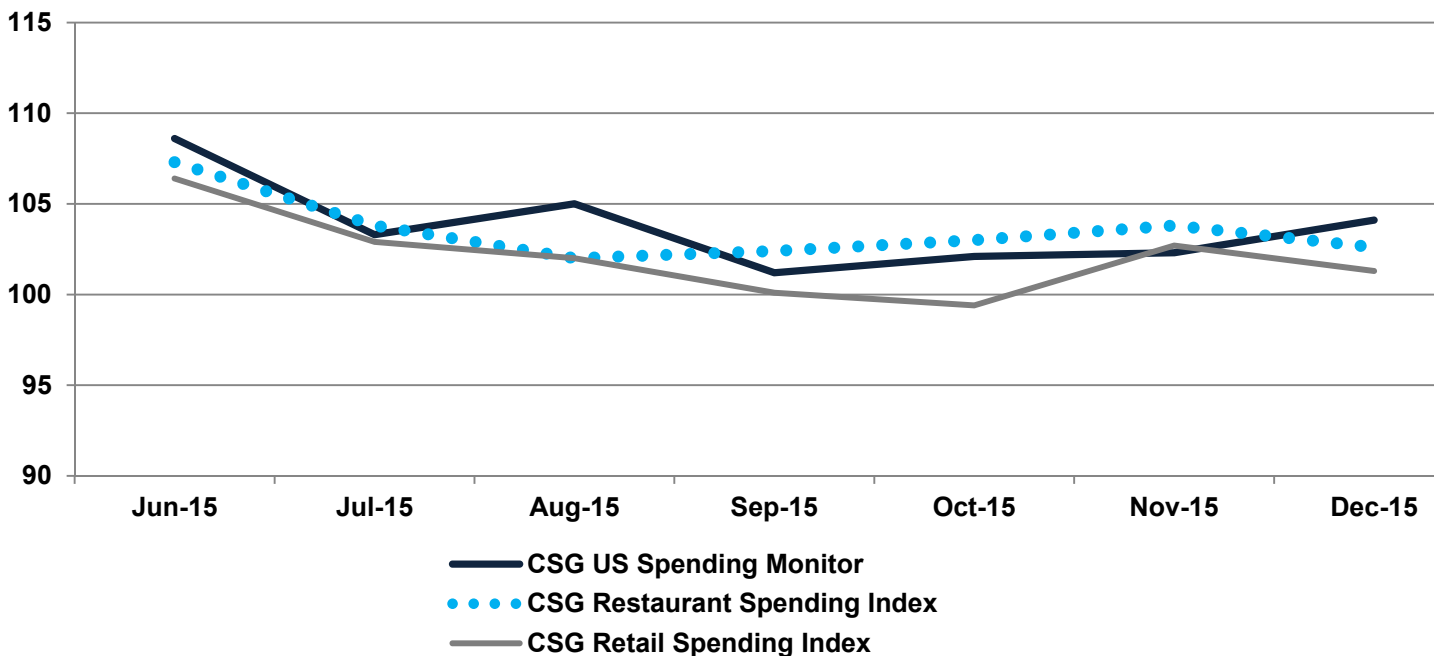
January 2016

Consumer Spending Report (CSR):

CHAIN STORE GUIDE FORECASTS SLOW START TO 2016 RETAIL & RESTAURANT SPENDING

Data from Chain Store Guide's Consumer Spending report predicts a cool start to retail and restaurant spending. Understandably, many American adults will begin January recovering from holiday expenses. In addition, various abnormal weather conditions across the country and an uncertain economy will cause a pull-back in spending. Both of the CSG retail and restaurant spending indexes declined as a result of December consumer polling, leading to the low spending predictions beginning in January.

Spending Monitor and Index Trends

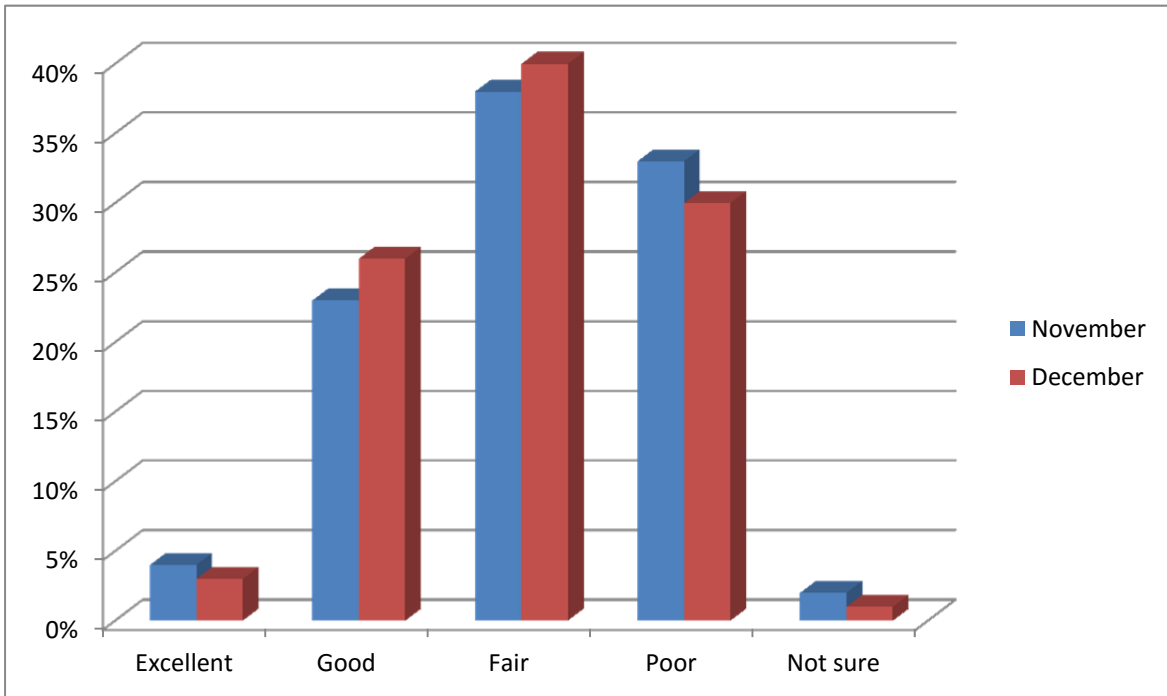


- The **CSG Restaurant Spending Index** decreased by 1.2 points. The current index is below its twelve-month average (104.4).
- The **CSG Retail Spending Index** decreased during December by 1.4 points to 101.3. This is the index's largest decrease since July 2015.
- The **CSG US Spending Monitor** increased by 1.8 points during December polling to 104.1. It still sits below the current twelve-month average of 105.5. However, December marked its highest point since June 2015.

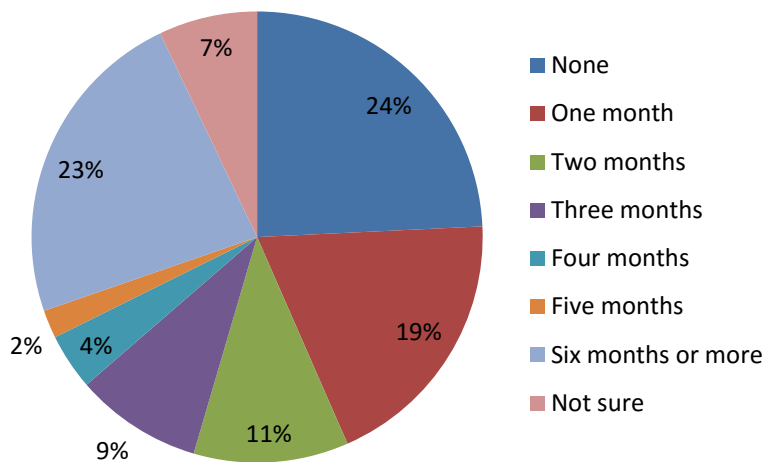


US Economy and Consumer Finances

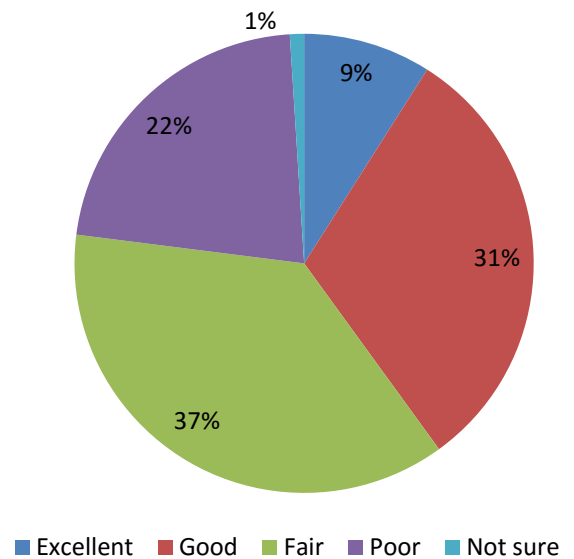
Generally speaking, how would you rate the U.S. economy these days?



Months of Emergency Savings:



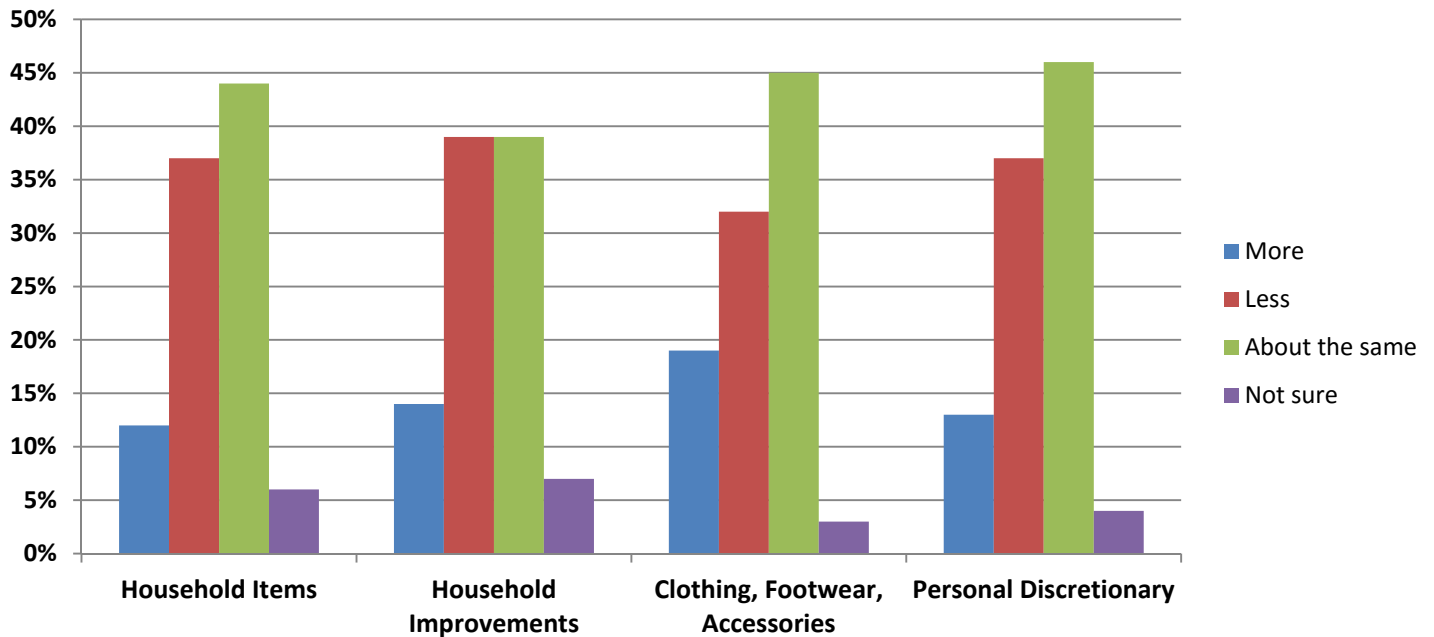
Current Personal Finances:



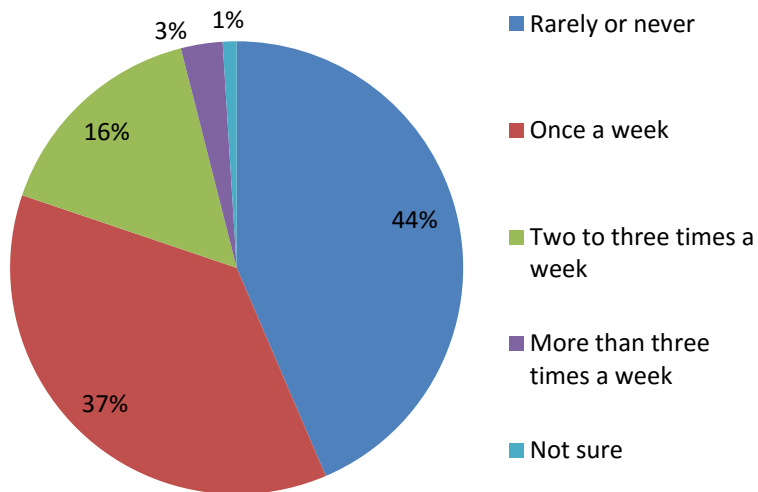


Consumer Spending Insights

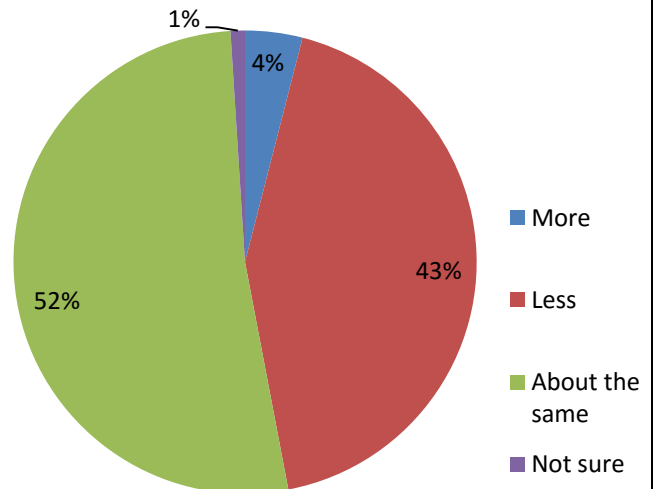
In the next month, will you spend more, less or about the same on...



In a typical week, how often do you go out to eat?



Compared to six months ago, are you going out to eat more often, less often or about the same as before?





About Chain Store Guide

For 80 years, Chain Store Guide (CSG) has been the leading provider of comprehensive and definitive retail and foodservice intelligence to businesses around the world.

Chain Store Guide data is the definitive source that is used by manufacturers, suppliers, service providers, brokers, real estate professionals, retailers, analysts, consultants and other professionals seeking to gain insight into retail and foodservice markets in the U.S. and Canada.

Chain Store Guide Data Is Used For:

Market Forecasting & Data Blending

CSG can forecast predictive analysis through 2025 using six to ten years of historical data and sound logic algorithms.

Consumer Spending Data

The CSR is a sampling of the data that we provide. Additional data can be customized to fit any business or media needs.

Competitive Analysis

Perform your own competitive benchmarking to gain key insight into your marketplace or let the CSG experts do it for you.

Proximity & Market Share

Keep your eye on the competition. Knowing who the players are on the field is essential for developing a successful strategic plan.

Market & Trend Analysis

Analyze over 700,000 locations for strategic planning and market positioning.

Industry Profiling

Specific industry data to support your sales, marketing, and business development needs.

Site Planning

Determine market and territory potential for expansion or relocation. Map and plot for site, geographic and demographic analysis.

Data Appending/Cleansing

Utilize CSG data to append your records and track changes. Our list augmentation experts can match records against our master data bank and append any missing information. We can also correlate & convert multiple Unique Company Identifiers and match them to the CSG Company ID.

Sales Leads Generation

Updated daily to add to your sales & marketing prospects database.

If you would like additional analyses that we have not provided in this report, please contact Brian List at blist@chainstoreguide.com.

Brian List

Sr. Manager, Market Research
813 627-6943