

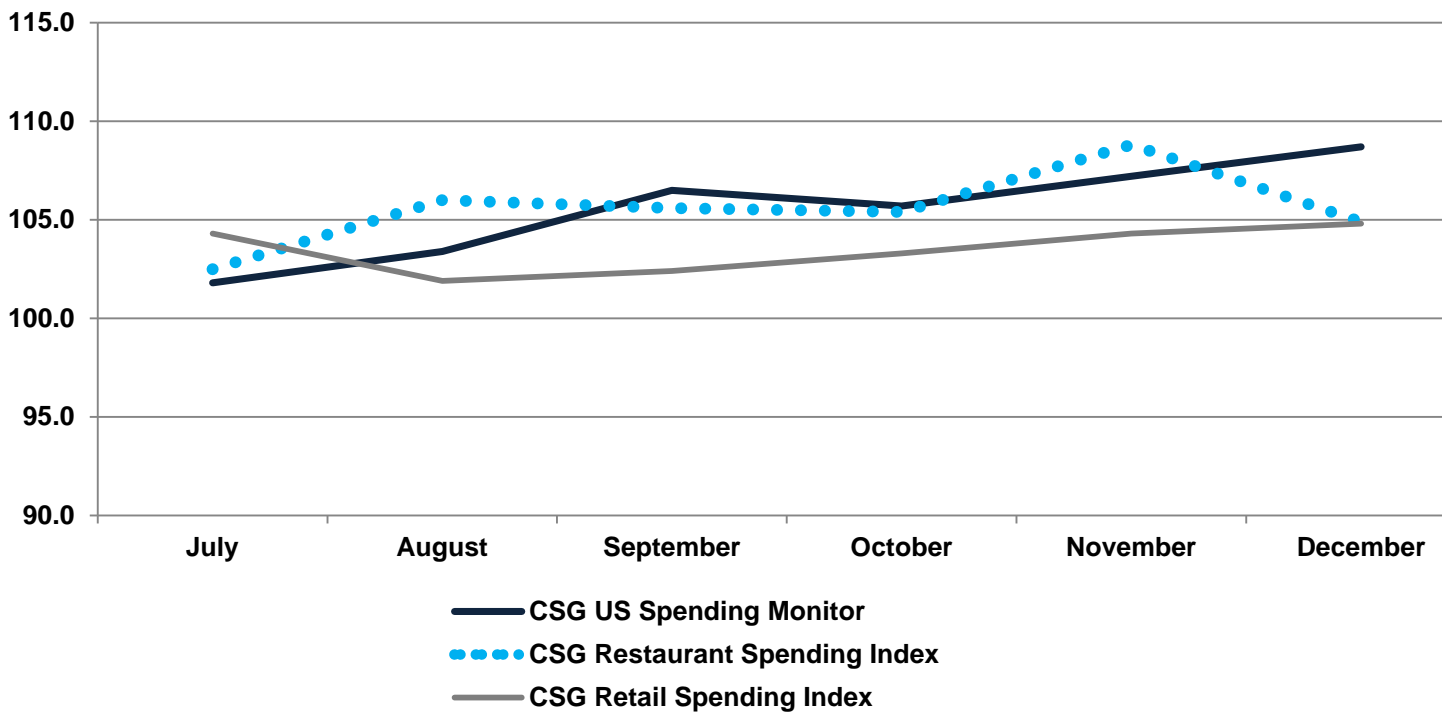


CSG SPENDING MONITOR: STRONG CONSUMER SPENDING EXPECTED TO RING IN THE NEW YEAR

January 2017

Consumer confidence in the economy is still riding high after President-Elect Donald Trump's historic victory. Chain Store Guide's US Spending Monitor reached another twelve-month high in December polling, indicating American consumers feel confident about the strength of the economy as well as the state of their current and future personal finances. The restaurant industry continues to be volatile, as consumers are eating out less and eating home more. Still, bright spots can be found in certain segments. Household goods and home improvements should see a slight uptick in consumer activity throughout the first quarter of 2017.

CSG Spending Monitor and Index Trends

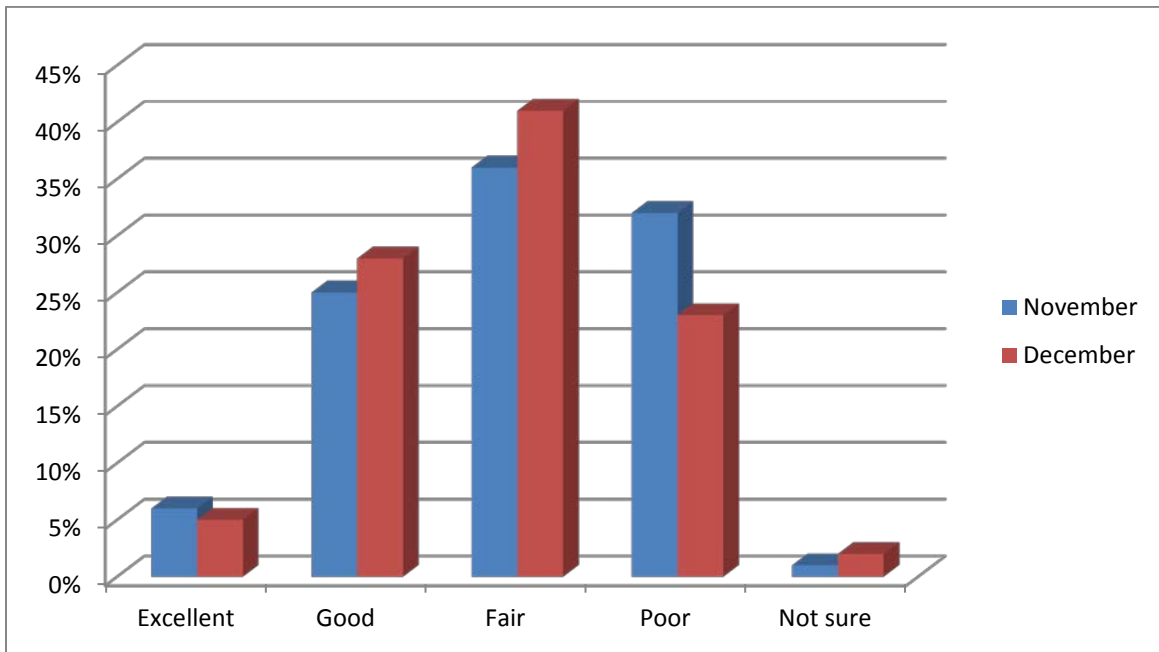


- The **CSG US Spending Monitor** increased to 108.2.
- The **CSG Restaurant Spending Index** decreased to 104.9.
- The **CSG Retail Spending Index** increased slightly to 104.8.



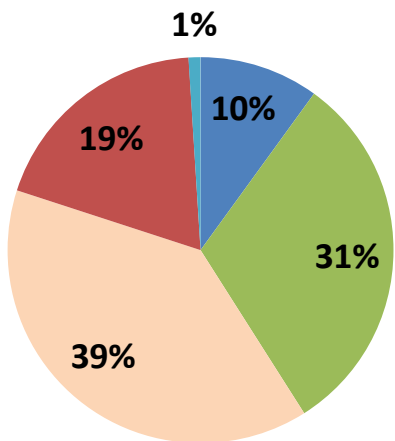
US Economy and Consumer Finances

How would you rate the U.S. economy?



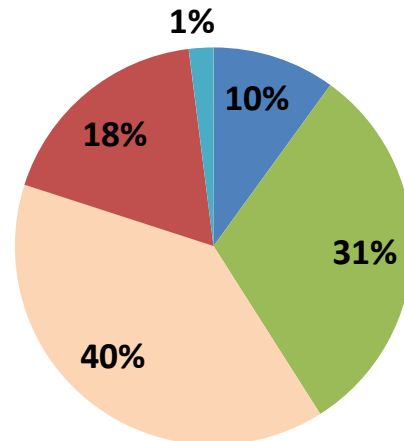
Current Personal Finances

12-Month Average



■ Excellent ■ Good ■ Fair ■ Poor ■ Not Sure

December Polling

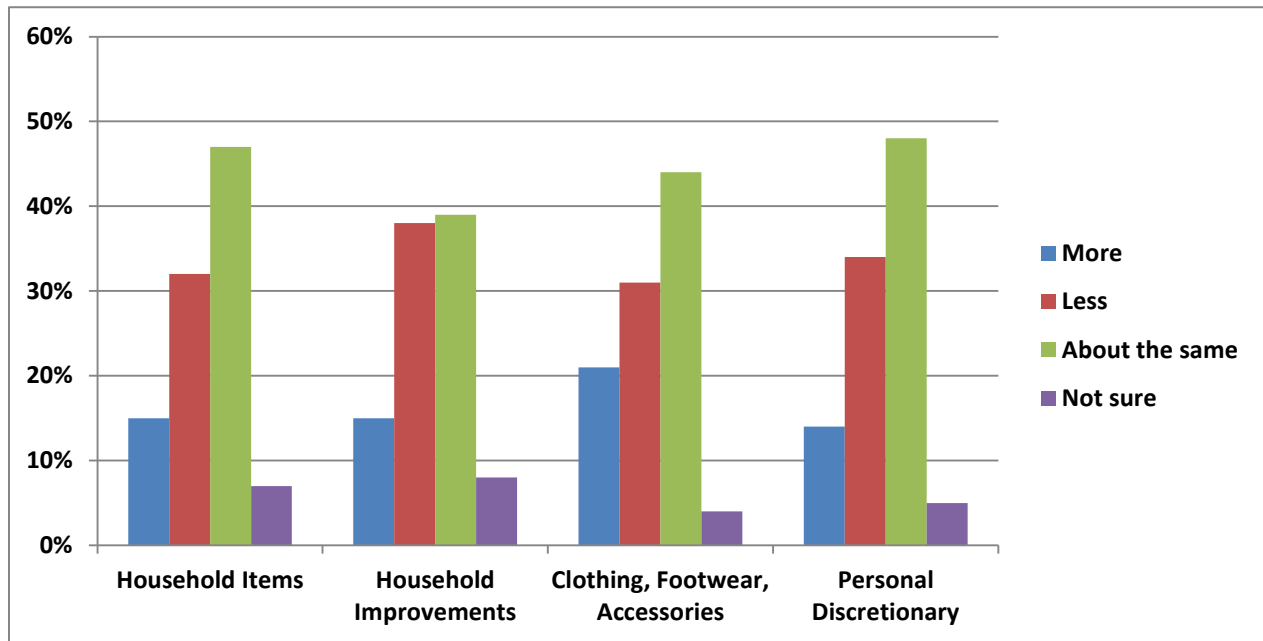


■ Excellent ■ Good ■ Fair ■ Poor ■ Not Sure

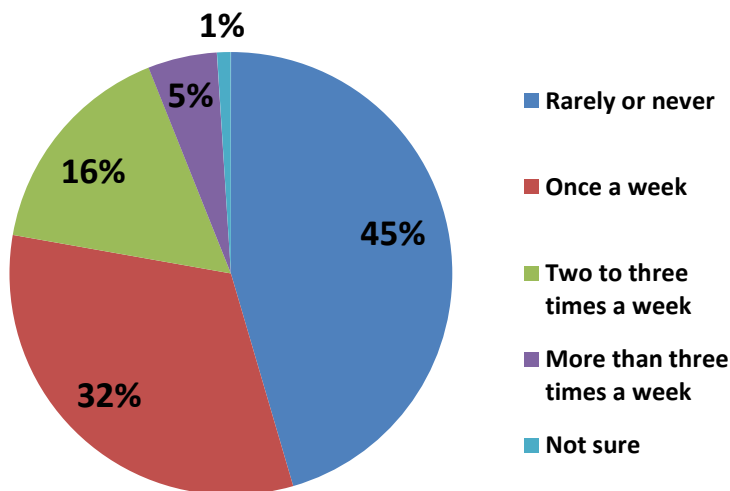


Consumer Spending Insights

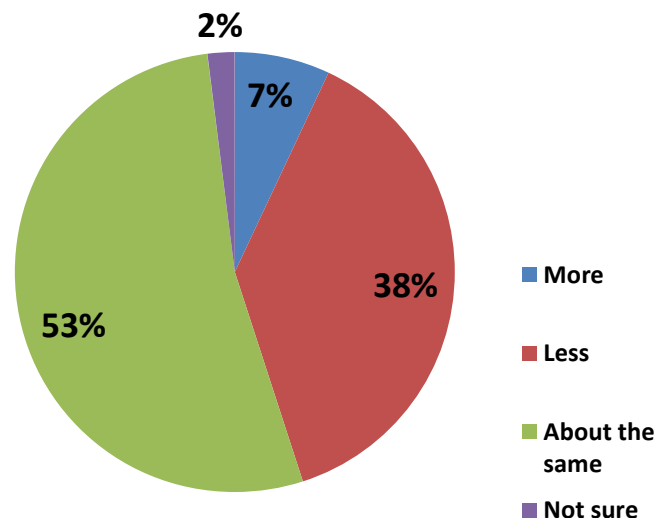
In the next month, will you spend more, less or about the same on . . .



In a typical week, how often do you go out to eat?



Compared to six months ago, are you going out to eat more often, less often or about the same as before?





About Chain Store Guide

For 80 years, Chain Store Guide (CSG) has been the leading provider of comprehensive and definitive retail and foodservice intelligence to businesses around the world.

Chain Store Guide data is the definitive source that is used by manufacturers, suppliers, service providers, brokers, real estate professionals, retailers, analysts, consultants and other professionals seeking to gain insight into retail and foodservice markets in the U.S. and Canada.

Chain Store Guide Data Is Used For:

Market Forecasting & Data Blending

CSG can forecast predictive analysis through 2025 using six to ten years of historical data and sound logic algorithms.

Consumer Spending Data

The CSR is a sampling of the data that we provide. Additional data can be customized to fit any business or media needs.

Competitive Analysis

Perform your own competitive benchmarking to gain key insight into your marketplace or let the CSG experts do it for you.

Proximity & Market Share

Keep your eye on the competition. Knowing who the players are on the field is essential for developing a successful strategic plan.

Market & Trend Analysis

Analyze over 750,000 locations for strategic planning and market positioning.

Industry Profiling

Specific industry data to support your sales, marketing, and business development needs.

Site Planning

Determine market and territory potential for expansion or relocation. Map and plot for site, geographic and demographic analysis.

Data Appending/Cleansing

Utilize CSG data to append your records and track changes. Our list augmentation experts can match records against our master data bank and append any missing information. We can also correlate & convert multiple Unique Company Identifiers and match them to the CSG Company ID.

Sales Leads Generation

Updated daily to add to your sales & marketing prospects database.

If you would like additional analyses that we have not provided in this report, please contact Brian List at blist@chainstoreguide.com.

Brian List

Sr. Manager, Market Research
813 627-6943